

Our Water-based Airbrush foundation dries to a natural finish an appearance of healthy skin with a natural glow. Because Digital Media can expose more detail in makeup, an overly matte foundation can look very dry and reveal skin textures including fine lines and wrinkles. Similarly, an overly dewy finish can appear greasy or oily in Hi-Def. Airbrush makeup sets moments after being applied, requiring no setting powder for most skin types, however you may use a light brush of loose powder if desired. Airbrush makeup can be applied lightly at a low PSI for a sheer finish; it is lightweight, breathable. You may add you own touches with Essence of Fragrances found at your Health Food Store (all natural) from Fruits to Flowers..and the oils will add a little moisture if need be. Also each Airbrush System is different by the PSI and needle size of your Airbrush Gun needle you may have to thin Makeup for different systems using a Purified water or Distilled Water (the distilled has a slight smell to it) your choice.



Begin by firmly attaching your airbrush to your compressor's air hose, forming an airtight seal.

**Optional:** To preserve the integrity of the formula you're working with, attach a **Moisture Filter** in between the air hose and the airbrush. For the precise control of air on compressors without built-in regulators, a **Bleed Valve** can be attached instead.



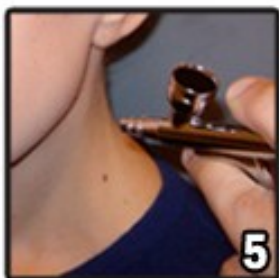
Place several drops of product into the top feed cup of your airbrush. For beauty makeup applications, it's best to use no more than six to eight drops at a time. The average application will require no more than this amount, and excess product will simply accumulate in the cup, making it more difficult to clean afterwards. If extra coverage is required, simply repeat the process as necessary.



Turn your compressor on and select the appropriate level of pressure for your application. At a higher pressure level, an airbrush sprays more product giving you less control. Lower pressure yields less product and gives you more control over your airbrush. Begin only by pressing down on your airbrush's trigger - it will spray only air, so that you can test the pressure level before getting started.



While only spraying air, bring the airbrush towards your client's skin to get them used to the sensation before applying any product. When you're ready to start, pull back slowly on the trigger while continuing to press it down. This will slowly release the product. It is not necessary to pull the trigger all the way back. Use this dual action feature of your airbrush to regulate the amount of product you're using.



As with any foundation, test the product along the jawline to determine an accurate match. Maintaining an even distance of three to six inches from the skin, slowly pass from one side of the face towards the other to create even coverage. Resist the temptation to linger in any one area for too long - this will only result in heavy product build up. Build your coverage in multiple passes for a more beautiful, natural finish.

Any further questions please email at [airbrush@airink.com](mailto:airbrush@airink.com)